

# HeadFeedHands

## Physical Theatre

### „Fischen ohne Helm“

#### Technical Rider

##### **Stage measures:**

Minimum: 7m x 7,30m x 4 m height

Optimum: 9m x 9m x 6 m height or more

##### **Schedule**

Unloading of stage design, buildup: 2 hours

Adjusting the lighting (our technician with house technician) about 3-4hours

Technical rehearsals with performers and technicians for lighting and sound: 2 h

Put down stage design: 2h

Representation: 75 minutes without break

##### **Operation Schedule day of representation**

10:00 – 12:00 Unloading stage design

11:30 – 16:00 Adjusting the lighting (House technician for lights with technician of company )

16:00 - 18:00 Technical Rehearsal (House technicians for lights and sound)

18:00 – 20:00 Adjustment of lighting

20:00 Representation (House technician for sound and technician for lights of company)

##### **Audio**

Audio material is on cd

We need one house technician for sound during the representation

##### **Lighting**

See extra lighting plan

House technician for buildup and adjustment with technician of the company

The technician of the company will control the lights during representation

##### **Backstage**

For 5 performers – Light, mirror, washbasin, shower and toilette

##### **Preparation of the stage before arrival of the company**

Black dance carpet

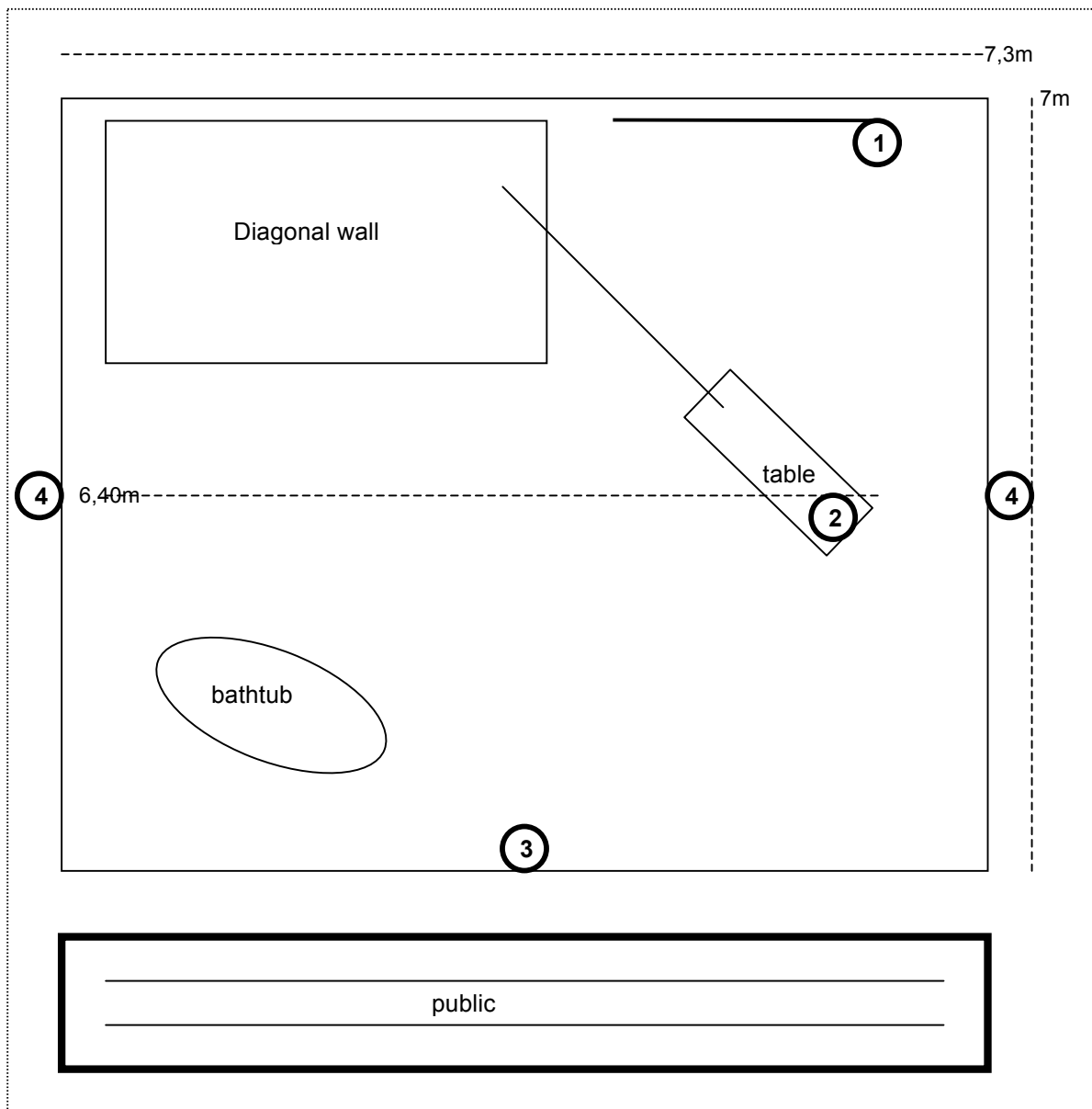
Black curtains in the back and lateral

Cleaning utensils for the floor

1 chair

Further see stageplan (page 2)

## Stageplan



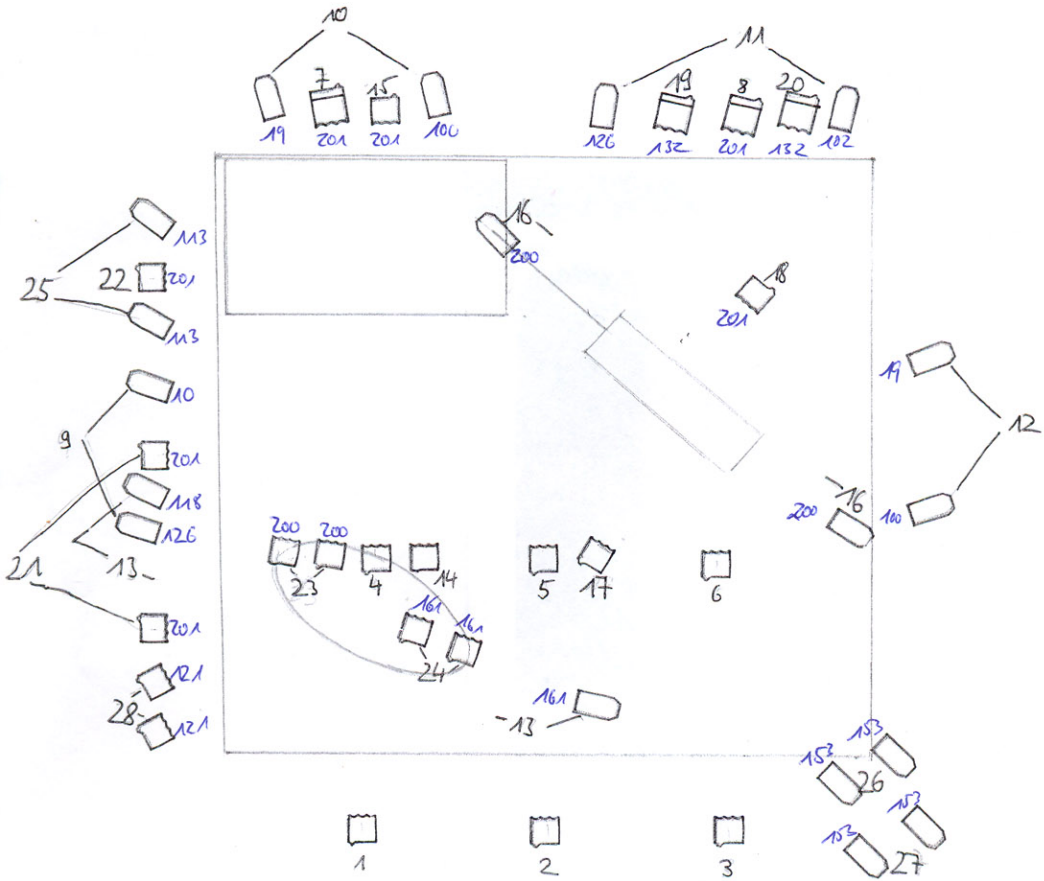
- 1 – Decor (5kg), installed on two points. For that we need a traverse
- 2 – Here we need one electrical connection (standard) and an extension cable
- 3 – If it is a high stage, we need something that restrains objects from falling down the stage
- 4 – The same lateral

**For all technical questions please contact us: [info@headfeedhands.de](mailto:info@headfeedhands.de)**  
**Thank you**


**Company HeadFeedHands**


# Fischen ohne Helm - Hängeplan

Variante kleine Bühne (7,5 x 8m)



  
Fresnel  
2kw

  
Fresnel  
1kw

  
Par 64  
CP 62