

# HeadFeedHands

Physical Theatre

## „One Room Ticket“

### Technical Rider

#### Stage measures:

Minimum: 7m deep x 7m x 4 m high

#### Schedule

Unloading of stage design, buildup: 2 hours

Adjusting the lighting (our technician with house technician) about 3-4hours

Technical rehearsals with performers and technicians for lighting and sound: 2 h

Put down stage design: 2h

Representation: 75 minutes without break

#### Operation Schedule day of representation

10:00 – 12:00 Unloading stage design

11:30 – 16:00 Adjusting the lighting (House technician for lights with technician of company )

16:00 - 18:00 Technical Rehearsal (House technicians for lights and sound)

18:00 – 20:00 Adjustment of lighting

20:00 Representation (House technician for sound and technician for lights of company)

#### Preparation of the stage before arrival of the company

Black dance carpet

Black curtains in the back and lateral

Cleaning utensils for the floor

Possibility to enter stage through the middle of the back curtain. Minimum 60 cm space behind the back curtain.

#### Audio

Audio material is on cd

We need one house technician for sound during the representation

We need 1-3 microphones (Lavalier) for the bouncophon.

#### Lighting

XLR Connection (DMX-Signal, 3-polig oder 5-polig) behind the stage for lighting in the bouncophon.

See also extra lighting plan

House technician for buildup and adjustment with technician of the company

The technician of the company will control the lights during representation

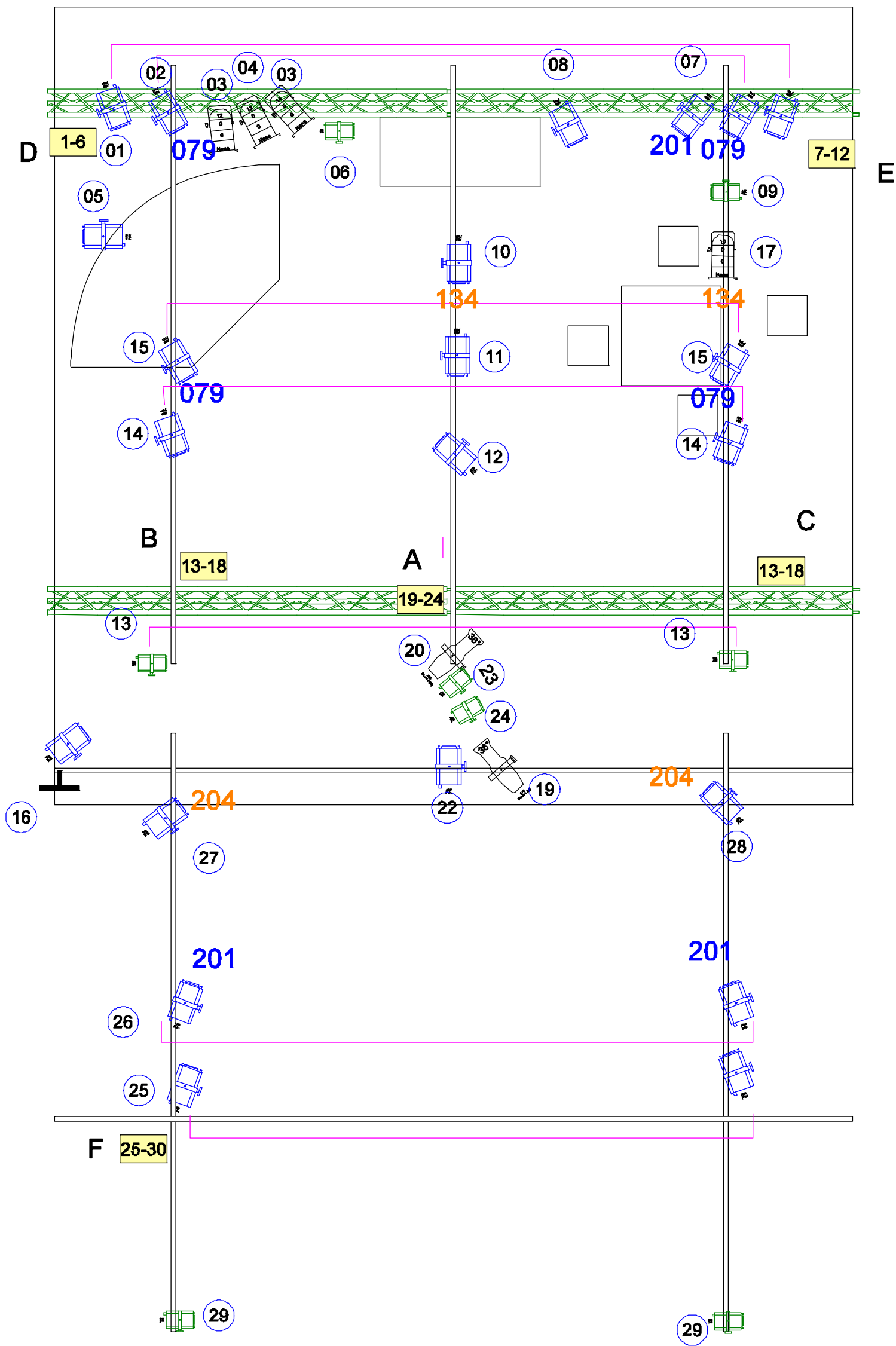
#### Backstage


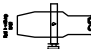
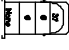

For 4 performers – Light, mirror, washbasin, shower and toilette

**For all technical questions please contact us: [info@headfeedhands.de](mailto:info@headfeedhands.de)**

**Thank you**

**Company HeadFeedHands**



Legende		
	22	1 kW Fresnel
	2	ETC S4 575W
	4	1kw PAR 64, CP 62
	6	650W Fresnel

Klient HEADFEEDHANDS		Projekt <i>One Room Ticket</i>	
Gezeichnet: R.Ludwig	Maßstab: 1:xxx	Datum: 2.11.2006	
Betrifft:		Beleuchtungsplan	
Zeichnung	2	Rev:	1
Rainer Ludwig Großfriedrichsburgerstraße 17a 81827 München Fon: +49-89-45 31 09 14 Fax: +49-89-45 31 09 15 mobil: 0174-9 22 98 77 e-mail: info@lightlounge.net			